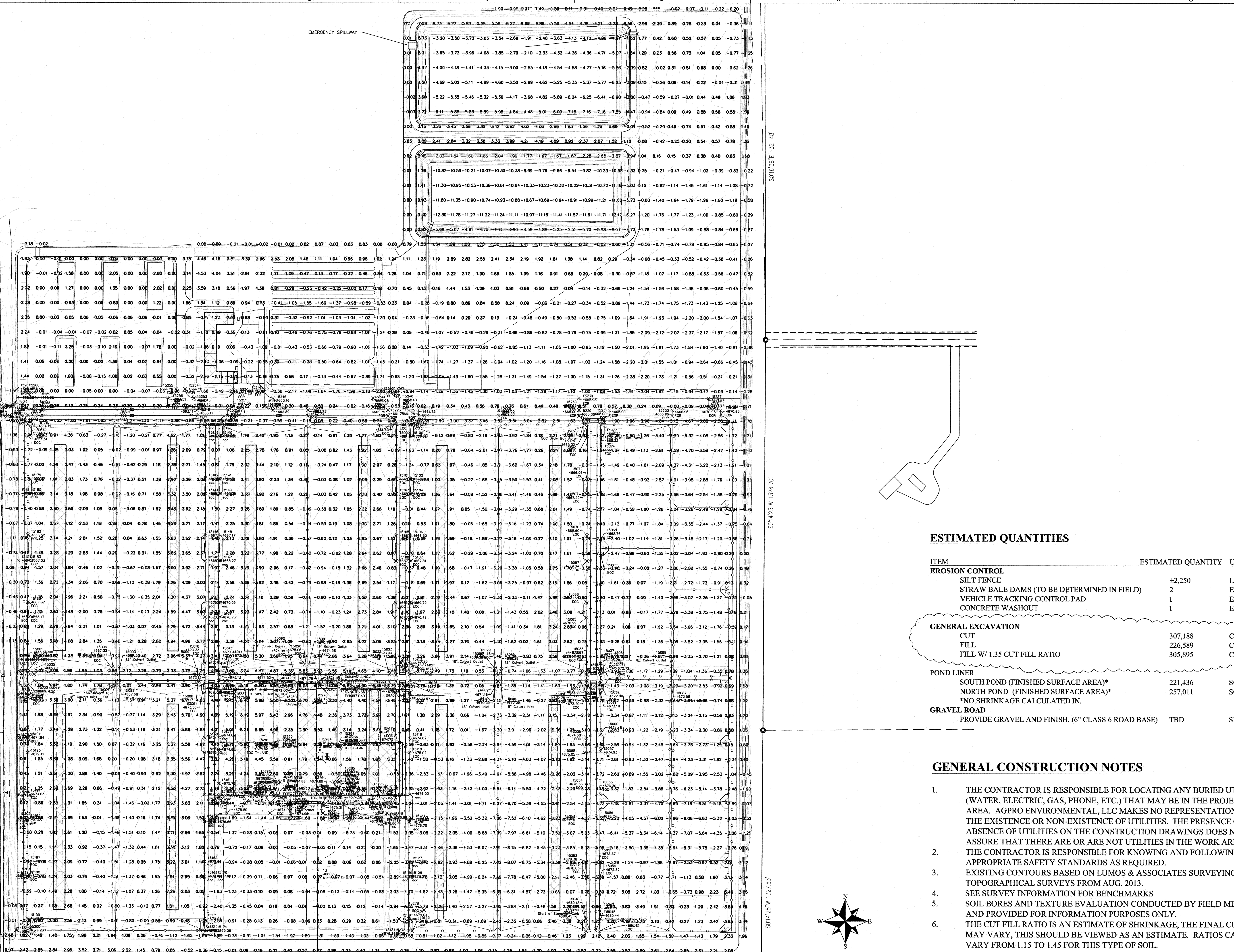


PROPOSED CUT-FILL MAP

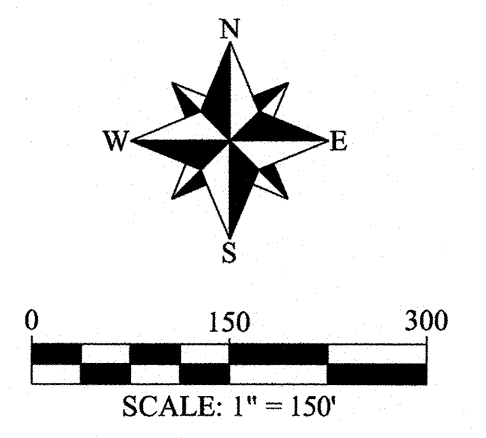


ESTIMATED QUANTITIES

ITEM	ESTIMATED QUANTITY	UNIT
EROSION CONTROL		
SILT FENCE	±2,250	LF
STRAW BALE DAMS (TO BE DETERMINED IN FIELD)	2	EA
VEHICLE TRACKING CONTROL PAD	1	EA
CONCRETE WASHOUT	1	EA
GENERAL EXCAVATION		
CUT	307,188	CY
FILL	226,589	CY
FILL W/ 1.35 CUT FILL RATIO	305,895	CY
POND LINER		
SOUTH POND (FINISHED SURFACE AREA)*	221,436	SQ.FT
NORTH POND (FINISHED SURFACE AREA)*	257,011	SQ.FT
*NO SHRINKAGE CALCULATED IN.		
GRAVEL ROAD		
PROVIDE GRAVEL AND FINISH, (6" CLASS 6 ROAD BASE)	TBD	SF

GENERAL CONSTRUCTION NOTES

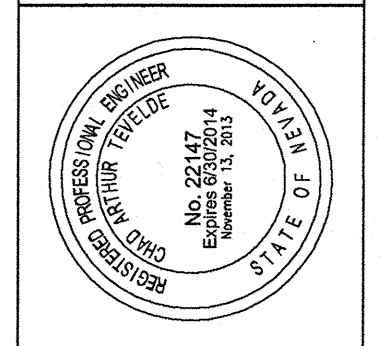
1. THE CONTRACTOR IS RESPONSIBLE FOR LOCATING ANY BURIED UTILITIES (WATER, ELECTRIC, GAS, PHONE, ETC.) THAT MAY BE IN THE PROJECT AREA. AGPRO ENVIRONMENTAL, LLC MAKES NO REPRESENTATION OF THE EXISTENCE OR NON-EXISTENCE OF UTILITIES. THE PRESENCE OR ABSENCE OF UTILITIES ON THE CONSTRUCTION DRAWINGS DOES NOT ASSURE THAT THERE ARE OR ARE NOT UTILITIES IN THE WORK AREA.
2. THE CONTRACTOR IS RESPONSIBLE FOR KNOWING AND FOLLOWING THE APPROPRIATE SAFETY STANDARDS AS REQUIRED.
3. EXISTING CONTOURS BASED ON LUMOS & ASSOCIATES SURVEYING TOPOGRAPHICAL SURVEYS FROM AUG. 2013.
4. SEE SURVEY INFORMATION FOR BENCHMARKS
5. SOIL BORES AND TEXTURE EVALUATION CONDUCTED BY FIELD METHODS AND PROVIDED FOR INFORMATION PURPOSES ONLY.
6. THE CUT FILL RATIO IS AN ESTIMATE OF SHRINKAGE. THE FINAL CUT FILL MAY VARY, THIS SHOULD BE VIEWED AS AN ESTIMATE. RATIOS CAN VARY FROM 1.15 TO 1.45 FOR THIS TYPE OF SOIL.



DATE:	July 31, 2014
SCALE:	AS SHOWN
FILE:	
SIZE:	ARCH D (36X36)
UNITS:	ENGLISH
DRAWN BY:	
REVISIONS:	
NUMBER:	
DATE:	
1	NOVEMBER 13, 2013

AGPRO
fessionals
DEVELOPERS OF AGRICULTURE

3050 67th Avenue, Suite 200, Greeley, CO 80634
(970) 535-9318 • fax: (970) 535-9854



SMITH VALLEY DAIRY
PROPOSED CUT FILL

LYON COUNTY, NEVADA

SHEET:
GR-3

SMITH VALLEY DAIRY
PROPOSED CUT FILL